



# Safety Kid II

An additional anti-submarine device

The device is intended to prevent the fall of the passengers and the risk of «sub-mari-ning» during the trip. The device is placed between the passengers legs during the downward of the railing. Number of devices needed per chairlift will be based on the choice of the operator.



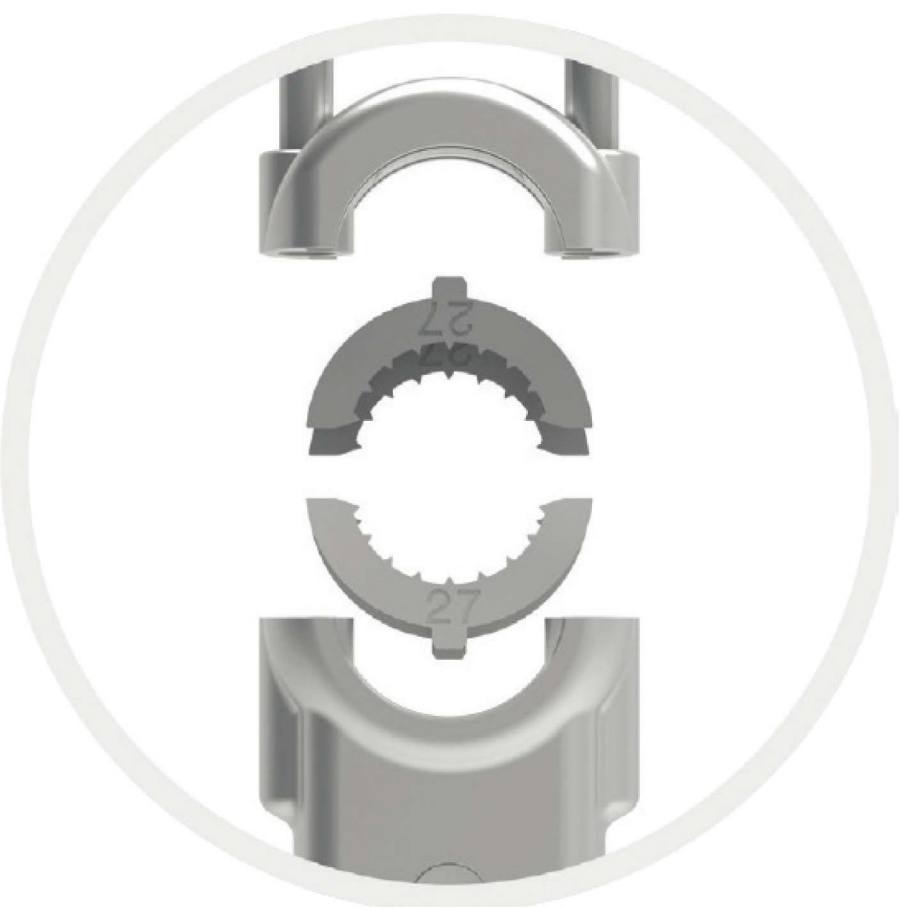
## Device benefits

- Economical and efficient
- Childish assembly and ultra fast without drilling the railing
- Rounded shape on the bottom to minimize shocks and punching
- Section optimized for inertia in the direction of passengers fall
- Flexibility in the transverse direction
- Lightweight. Calculated weight 300 gr.
- Unbreakable barrier, interchangeable flexible plastic
- Can be mounted in curved portion of guardrail
- Can be used as Handle
- Fixing point provided for gripping strap (optional)



### SMALL WIDTH

Allow the transportation of persons with reduced mobility



### INTERCHANGEABLE CLAWS

Interchangeable clamping  
**22-40mm** restraining bar



### 2 FURNACES VARIETIES

2 furnaces varieties to optimize weight  
and dimensions.  
Assortment for **22-30** and **22-40**  
restraining bars.

### 5 LENGTHS

5 different plastic barrier lengths  
by **25mm** segments.

### LONGITUDINAL STIFFNESS

Longitudinal stiffness  
opposed to passengers fall

### ROUNDED SHAPE

Rounded shape to cushion  
and reduce shocks and punching

### TRANSVERSE FLEXIBILITY

« **SAFETY** » branding for  
passengers information

Flexible and unbreakable plastic  
barrier, different colors available

Attachement point  
for strap

